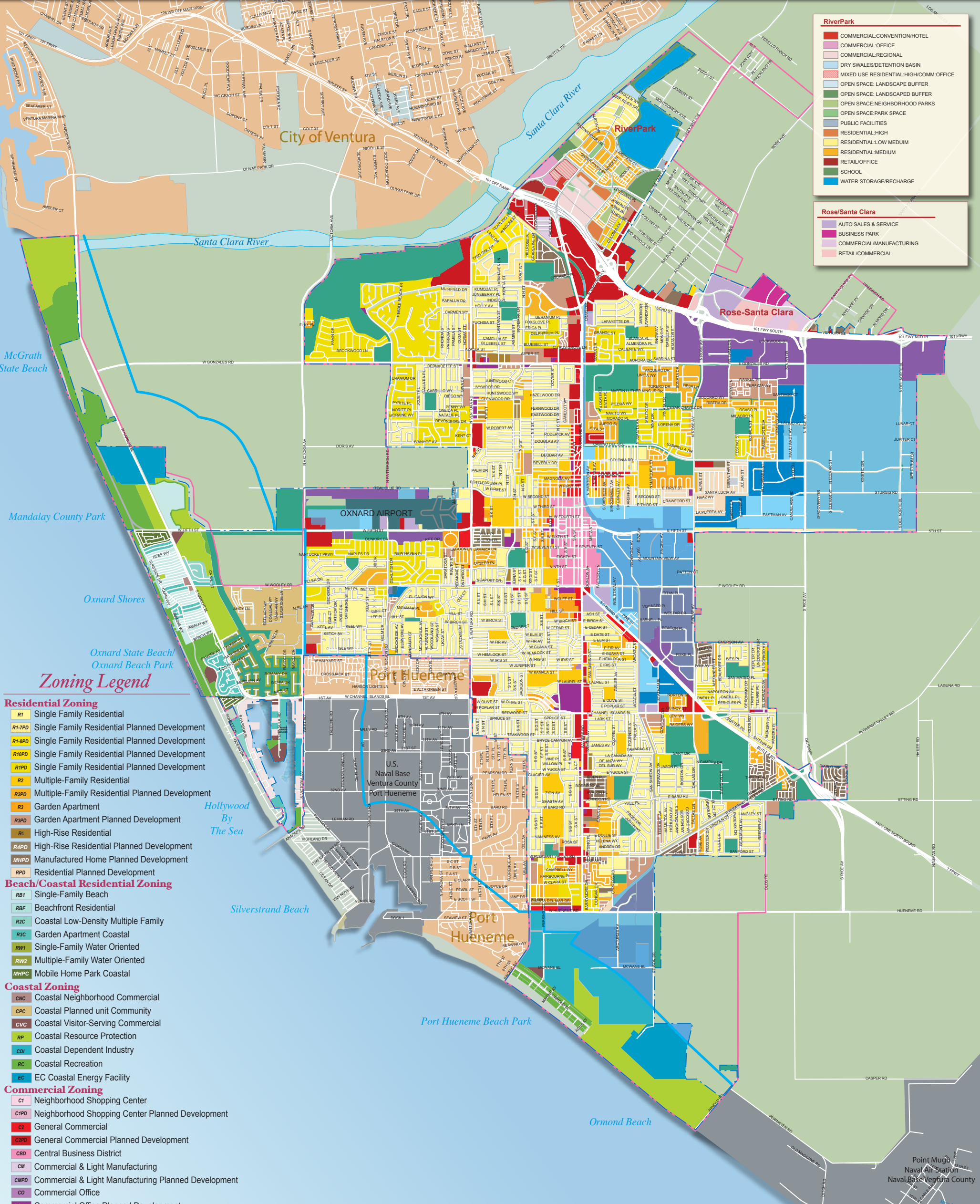




City of Oxnard Zoning Map



RiverPark

- COMMERCIAL CONVENTION/HOTEL
- COMMERCIAL OFFICE
- COMMERCIAL REGIONAL
- DRY SWALES/DETENTION BASIN
- MIXED USE RESIDENTIAL-HIGH/COMM-OFFICE
- OPEN SPACE: LANDSCAPE BUFFER
- OPEN SPACE: NEIGHBORHOOD PARKS
- OPEN SPACE: PARK SPACE
- PUBLIC FACILITIES
- RESIDENTIAL-HIGH
- RESIDENTIAL-LOW MEDIUM
- RESIDENTIAL-MEDIUM
- RETAIL/OFFICE
- SCHOOL
- WATER STORAGE/RECHARGE

Rose/Santa Clara

- AUTO SALES & SERVICE
- BUSINESS PARK
- COMMERCIAL/MANUFACTURING
- RETAIL/COMMERCIAL

- Zoning Legend**
- Residential Zoning**
- R1 Single Family Residential
 - R1-7PD Single Family Residential Planned Development
 - R1-8PD Single Family Residential Planned Development
 - R10PD Single Family Residential Planned Development
 - R1PD Single Family Residential Planned Development
 - R2 Multiple-Family Residential
 - R2PD Multiple-Family Residential Planned Development
 - R3 Garden Apartment
 - R3PD Garden Apartment Planned Development
 - R4 High-Rise Residential
 - R4PD High-Rise Residential Planned Development
 - MHPD Manufactured Home Planned Development
 - RPD Residential Planned Development
- Beach/Coastal Residential Zoning**
- RB1 Single-Family Beach
 - RB2 Beachfront Residential
 - R2C Coastal Low-Density Multiple Family
 - R3C Garden Apartment Coastal
 - RW1 Single-Family Water Oriented
 - RW2 Multiple-Family Water Oriented
 - MHPC Mobile Home Park Coastal
- Coastal Zoning**
- CNC Coastal Neighborhood Commercial
 - CPC Coastal Planned Unit Community
 - CVC Coastal Visitor-Serving Commercial
 - RP Coastal Resource Protection
 - CDI Coastal Dependent Industry
 - RC Coastal Recreation
 - EC EC Coastal Energy Facility
- Commercial Zoning**
- C1 Neighborhood Shopping Center
 - C1PD Neighborhood Shopping Center Planned Development
 - C2 General Commercial
 - C2PD General Commercial Planned Development
 - CBD Central Business District
 - CM Commercial & Light Manufacturing
 - CMPD Commercial & Light Manufacturing Planned Development
 - CO Commercial Office
 - COPD Commercial Office Planned Development
- Industrial Zoning**
- M1 Light Manufacturing
 - M1PD Light Manufacturing Planned Development
 - M2 Heavy Manufacturing
 - M2PD Heavy Manufacturing Planned Development
 - ML Limited Manufacturing
 - MLPD Limited Manufacturing Planned Development
 - MPD Manufacturing Planned Development
 - BRP Business & Research Park
- Other**
- HCI Harbor-Channel Islands
 - CR Community Reserve
 - ER Easement/ROW
 - CNTY Ventura County
 - AO Agricultural Open Space
 - Military Base



The mapped data is derived from the City of Oxnard GIS Program, which is developed and operated solely for the convenience of the City. The maps are for illustrative purposes only. The City does not warrant the accuracy of these maps, and no decision involving a risk of injury or economic loss should be made in reliance thereon.

Zoning Map Boundary Legend

- Oxnard City Limits
Area: 26.9 sq. mi. (Dec. 2004)
Population 189,990 (D.O.E. 2006)
- Oxnard Sphere of Influence
Adopted by LAFCO 6-8-83, Revised 6-00
(30.43 sq. miles)
- Coastal Zone Boundary